

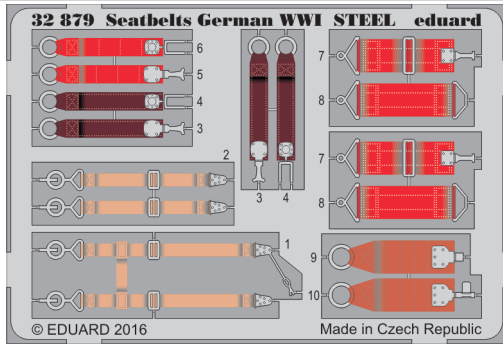


Seatbelts German WWI STEEL

eduard

32 879

1/32 scale detail set • sada detailů pro model 1/32



- ★ APPLY EXPRESS MASK AND PAINT BEFORE GLUING
POUŽIT EXPRESS MASK NABARVIT PŘED SLEPENÍM
- ☯ SYMMETRICAL ASSEMBLY
SYMETRICKÁ MONTÁŽ
- ☐ REMOVE
ODSTRANIT
- ☐ GRIND
OBROUSIT
- ☐ DRILL HOLE
VRTAT OTVOR
- 1 COLORED ETCHED PARTS
LEPTANÉ BAREVNÉ DÍLY
- 1 ETCHED PARTS
LEPTANÉ NEBAREVNÉ DÍLY
- 1 ORIGINAL KIT PARTS
PŮVODNÍ DÍLY STAVEBNICE
- ↷ BEND
OHNOUT
- ? OPTION
VOLBA
- Ⓜ REPLACE
NAHRADIT

ORIGINAL KIT PARTS
PŮVODNÍ DÍLY STAVEBNICE

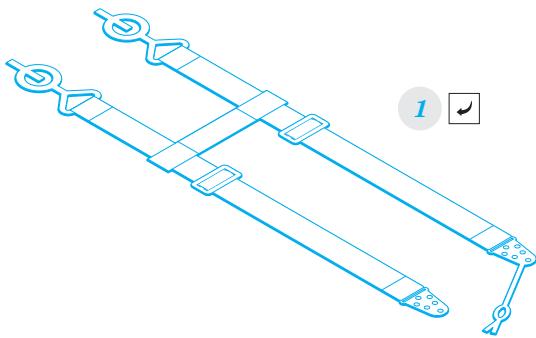
PHOTO-ETCHED PARTS
LEPTANÉ DÍLY

PARTS TO BE REMOVED
DÍLY K ODSTRANĚNÍ

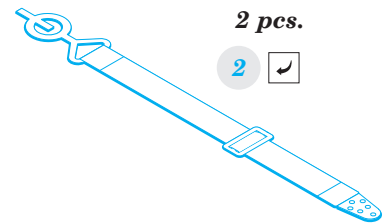
FILL
TMELIT

I.

A

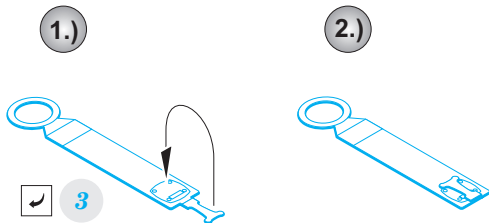


B

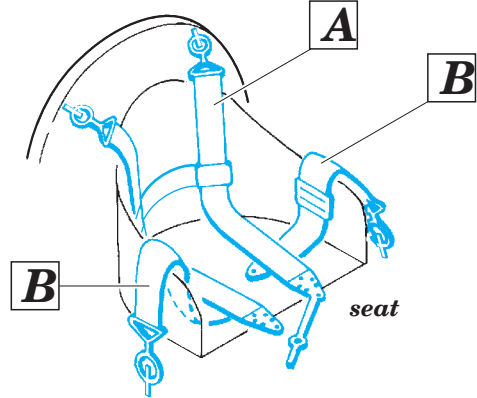


II.

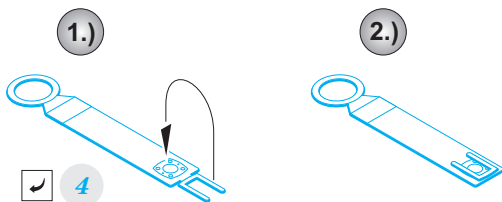
C



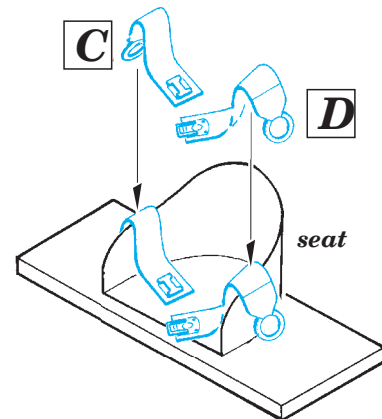
2 sets



D



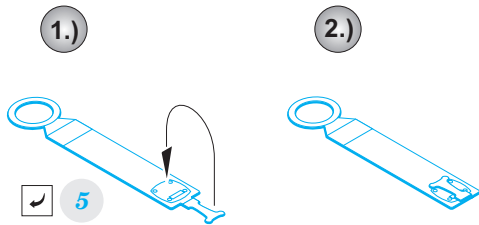
2 sets



Fokker
Aviatik
and other early planes
in 1914-1916

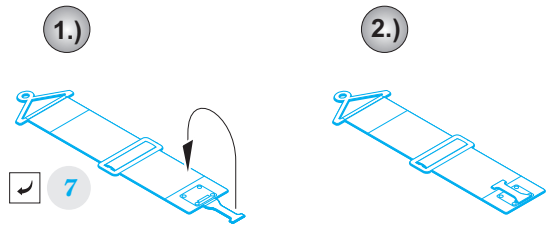
III.

E



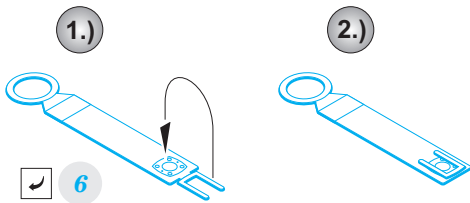
IV.

G

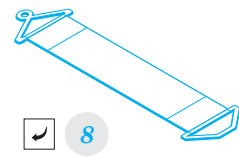


2 sets

F

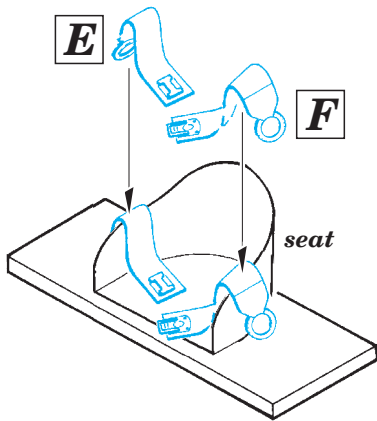


H



2 sets

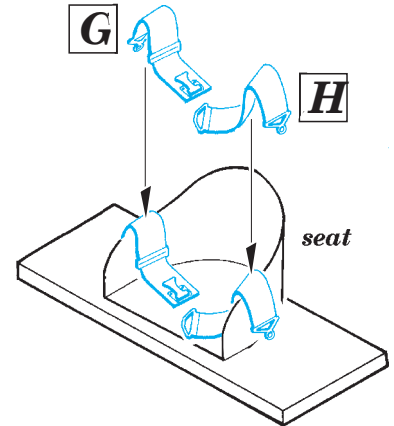
E



seat

Fokker Aviatik and other early planes in 1914-1916

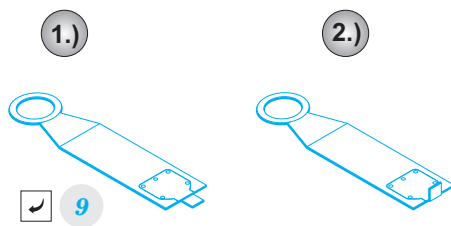
G



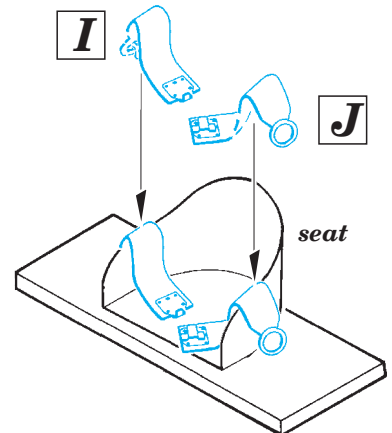
seat

V.

I



I



seat

*Albatros C.III
Hannover CL.III
and other multi seat
planes 1914-1918*

J

